



# Versana Balance™

Care with Confidence





# QUICK, EFFICIENT IMAGING FOR A BROAD RANGE OF PATIENTS

Whether you're working in a clinic or another OB/GYN setting, you can count on durable and dependable Versana Balance to deliver world-class care with no compromise on image quality.

Practical and versatile, this system supports a wide range of common OB/GYN ultrasound examinations and enables quick, efficient scanning to monitor and measure fetal growth.

**Competent. Efficient. Practical.**  
*World-class ultrasound designed for peace of mind.*



Excellent image  
quality



Time-saving clinical  
software for Breast  
assessment\*



Multi-gesture  
functionality\* enabled  
by a sensitive touch panel\*  
that results in an intuitive,  
intelligent workflow



Expert service and  
support



Flexible financing  
options



Flexibility to grow

\*Available on Versana Balance V2.

# A PARTNER YOU CAN TRUST

## Reach new levels of clinical excellence

With image quality that ranks with best in its class, you can reach new levels of clinical excellence. Versana Balance is well-suited for fetal assessments, pelvic exams and breast assessment. Proven functionalities include:

- Enhanced 3D/4D performance with **V-Live**\*
- Define structure borders clearly with **CrossXBeam™** and **SRI-HD**
- Observe and analyze blood flow for abnormalities and more with **color Doppler** and **B-Flow**

## Expert, dependable service and support

- Easy **e-delivery\*\*** of software updates
- **E-IFU\*** (electronic user manuals) for convenient access to product information
- **Probe Check\*** evaluates probe element performance, facilitating system maintenance



\*Available on Versana Balance V2.

\*\*Offerings may vary by country or region. Please check with your local GE Healthcare representative.

# A COMPLETE SOLUTION

## A competent, practical system for efficient imaging

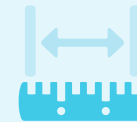
Key features on Versana Balance allow you to enjoy a streamlined workflow and greater productivity. You can also count on clinical support and service excellence to help you get the most out of your system.



Optimize image quality as you scan with **Whizz Dynamic Image Tuning**



Enhance or suppress the color flow signal with **Whizz Color Flow\***



Automated standard fetal measurements with **SonoBiometry Tool**



Speed breast exams with an anatomy specific **productivity package** that leverages BI-RADS® criteria



Create custom exam protocols and standardized workflows with **Scan Assistant**



Obtain desired scan plane with reference tool **Scan Coach OB**



Upload images and reports to the **Tricefy™ Cloud\*\*\*** or network storage (EMR, PACS) for consultation or sharing with patients



Simplify system set-up and product training with **My Trainer onboarding tool**



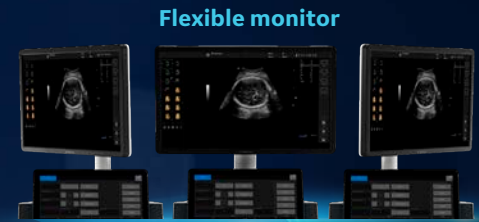
Add **Voice Comments** to exams

\*Available on Versana Balance V2.

\*\*\*Requires internet connection and a Tricefy subscription.



## CHECK OUT THESE CONVENIENT FEATURES



Flexible monitor

+ Large display



Height-adjustable console\*\*

Multi-gesture touch panel\*\*



Switchable gel warmer



Multiple probe holders



Cable management system

Front-facing probe connectors for easy access

Storage bin

+ Compact footprint

\*\*Offerings may vary by country or region. Please check with your local GE Healthcare representative.

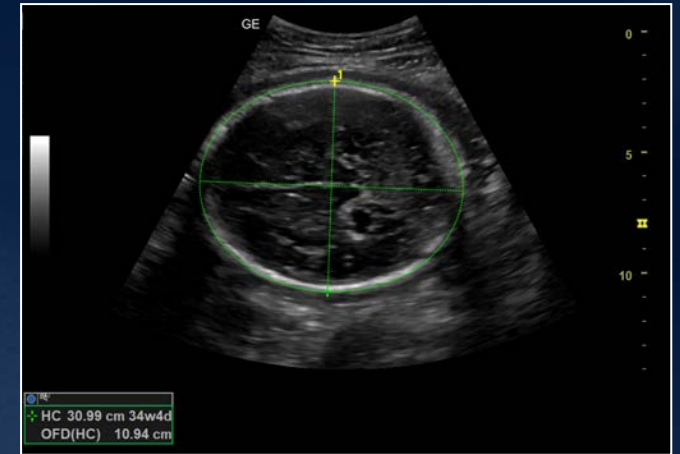
# IMAGE GALLERY



Umbilical cord with Doppler



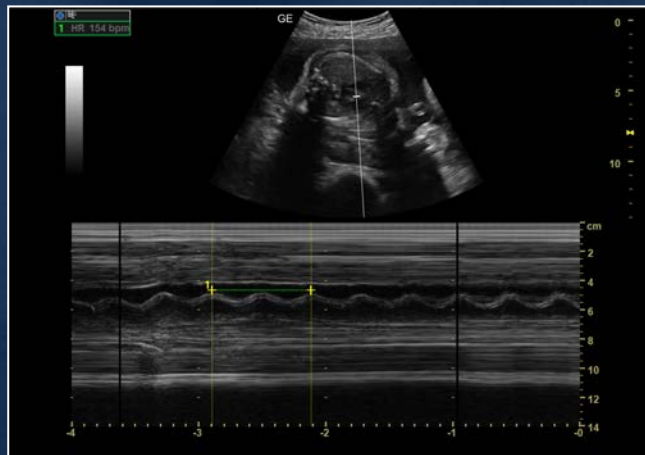
Static 3D with V-Live\*



Head circumference with SonoBiometry



Fetal spine



M-Mode fetal heart rate



Fetal echo

# AN OPPORTUNITY FOR GROWTH

## Ultrasound that serves you well today and into the future

Versana Balance is designed to grow with you. Start with a console and software package and add probes and optional upgrades as you go.

The expanded probe family includes:

- **4C-RS** – wide band convex array probe for near-field resolution and detail definition with abdominal, OB/GYN and pediatric imaging
- **L6-12-RS** – linear array probe for resolution with superficial imaging
- **12L-RS** – wide band linear array probe for resolution with superficial imaging
- **E8C-RS** – micro convex endocavity probe for penetration and resolution
- **E8Cs-RS** – micro convex endocavity probe with wide field of view
- **RAB2-6-RS** – curved array 3D/4D probe for resolution with OB imaging



## Advance your ultrasound skills with Versana Club

Versana Club offers resources to help you build your skills, network with others and share your ultrasound knowledge. Membership perks include:

- Image-sharing with peers around the world
- Web-based video tutorials and other educational offerings
- Information on Versana service solutions and products
- Articles on ultrasound and patient care

Register now at [www.versanaclub.net](http://www.versanaclub.net)



Products mentioned in the material may be subject to government regulation and may not be available in all countries. Shipment and the effective sale can only occur after approval from the regulator. Contact your GE representative for details.

© GE, 2022

GE Healthcare reserves the right to make changes in specifications and features shown herein, or discontinue the product described at any time without notice or obligation. Contact your GE Healthcare representative for the most current information. GE, the GE Monogram, Versana Balance and CrossXBeam are trademarks of GE. Tricefy trademarks are registered trademarks of Trice Imaging, Inc. BI-RADS is a registered trademark of the American College of Radiology. GE Healthcare, a division of GE.

April 2022  
JB18974XX