

AMX™ Navigate mobile X-ray system



Mobile X-ray designed to keep you going

Your job is demanding. It's not easy bringing X-ray directly to patients and consistently delivering a high level of care. To help ease your workload, we designed the AMX Navigate mobile X-ray system. It's nimble so it easily moves with you. Plus it's loaded with features that help provide consistent, reliable results.

The AMX Navigate takes X-ray to a new level of mobility, clinical capability, and reliability. Built on the AMX legacy of dependability, we made positioning easy with the Free Motion telescoping column.

In addition, our Zero Click Exam delivers an effortless workflow, and exclusive on-device AI applications help you triage critical care and enhance productivity. The end result is a system you can trust to be ready to go—wherever and whenever you need it.



Leave the heavy lifting to us

When designing AMX Navigate, our core focus was to remove the physical strain from your everyday workflow. We accomplished this by not only delivering the industry's first Free Motion telescoping column, which reduces the lift force by up to 70%¹, but by also providing FlashPad™ Plus+ glassless digital detectors which are 40% lighter than previous generations.²

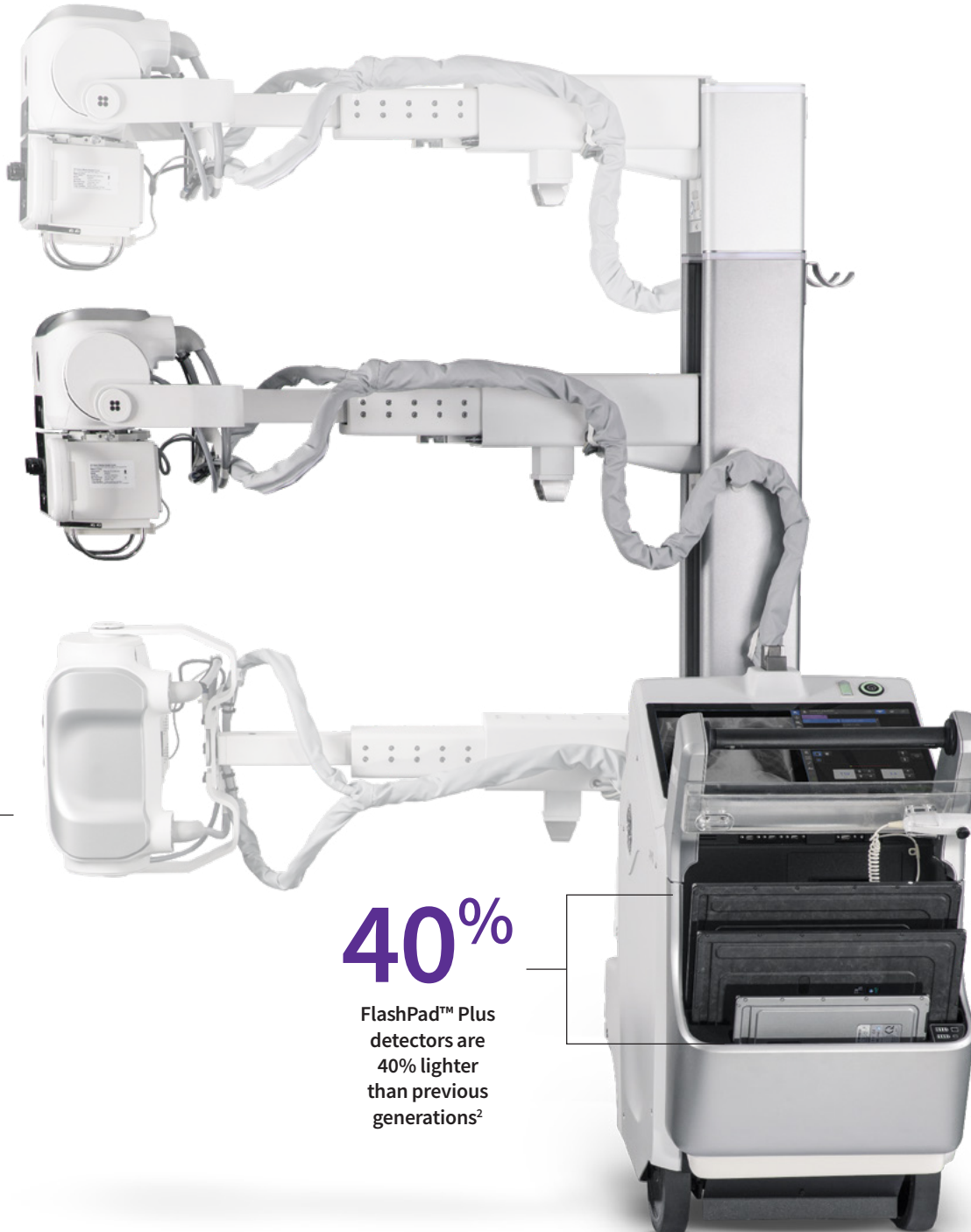
In addition to enhanced maneuverability, AMX Navigate improves usability with an advanced user interface (UI) and power management features on both the system and detectors. Together, these features give you the confidence you need at any time.



Effortless workflow

70%

Up to 70% reduction
in lift force¹



40%

FlashPad™ Plus
detectors are
40% lighter
than previous
generations²



Free Motion
telescoping column



21.5 inch touchscreen with
intuitive user interface



Power management



Pressure-sensitive drive



Small footprint

X-ray technologists asked. We delivered.



No one is more familiar with the ins and outs of X-ray imaging than the technologist. Knowing this, we consulted with technologists when designing AMX Navigate to make sure it lives up to the standards of those who will use it every day. We used their input to create a number of solutions, culminating in an effortless workflow model of efficiency.



No clicks or manual patient entry

Our Zero Click Exam streamlines the imaging process and eliminates up to 100% of clicks³. It incorporates features like an RFID badge reader login, barcode patient verification, and Auto Protocol Assist, which automatically selects the correct protocol for the patient. Additionally, an advanced UI delivers image processing in under 10 seconds and a customizable Quick Toolbar allows you to efficiently access commonly used functions. And the screen itself is easy to sanitize due to the QuickClean touchscreen lockout application.



Features patient barcode reader



Eliminates up to 100% of clicks³



Completes image processing in under 10 seconds

Leveraging AI for clear, consistent images



When we added Critical Care Suite to the AMX platform, it became the first mobile X-ray system in the world with on-device AI to identify and triage a pneumothorax, as well as provide immediate measurements for assisting in endotracheal tube placement. Additionally, Quality Care Suite leverages AI algorithms to assist technologists with automated quality checks across 7 anatomies that identify and flag quality errors during acquisition. These checks can help improve image quality and drive workflow efficiency.

And because staying up to date with AI applications is so important, our Smart Subscription offering gives you peace of mind in the budgeting process. With purchasing solutions that reduce variation from system to system, it's now easier than ever to stay current with the latest applications.

**In a recent study of
500 portable chest X-rays:**

46.2%
were problematic⁴

43.5%
of the problematic X-rays had to be repeated⁴

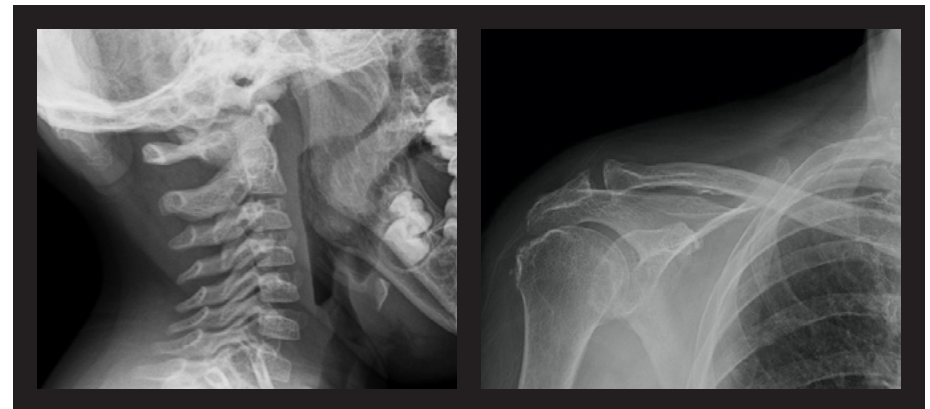
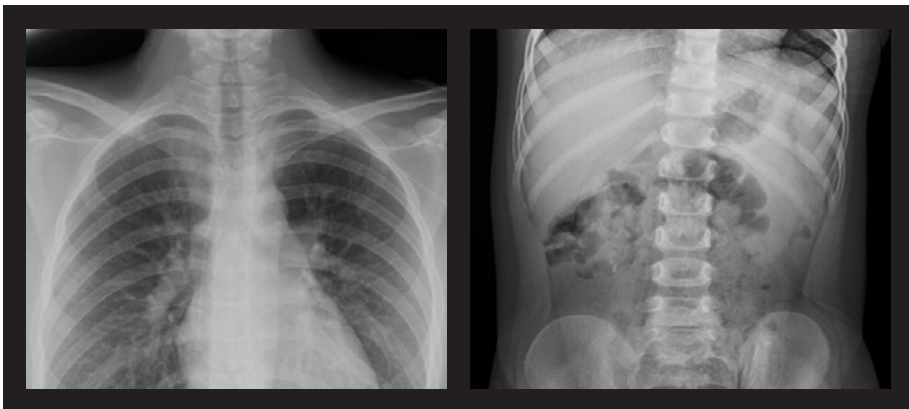
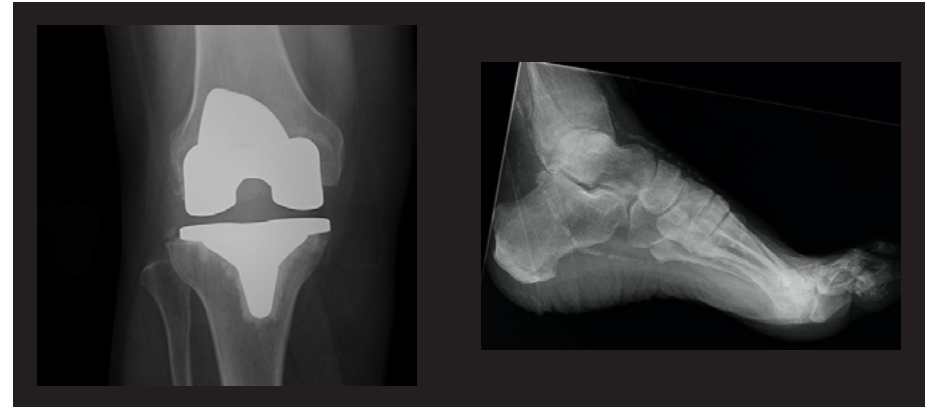
Diagnostic quality imaging from the very first X-ray

Helix™ 2.2 advanced image processing offers unparalleled sharpness, balanced contrast, and optimal brightness, even in the face of dose and patient anatomy variations, as well as challenging metal implants. Helix provides consistent performance regardless of exposure technique or exam conditions.

Automated AI Brightness and Contrast (AIBC) is available on 59 anatomy and view combinations, and delivers improved brightness and contrast presentation consistency.

Local Contrast Enhancement (LCE) increases local contrast for better visualization of the lungs, heart, and spine regions, as well as ankle joint (AP), foot (AP), and patella (tangential).

Detail Preserving Noise Reduction Filter (DPNR) offers significant noise reduction capabilities while minimizing the effect on fine details.



Where every patient becomes the point of care

AMX Navigate achieves uncompromised image quality through a wide range of clinical capabilities. The FlashPad™ Imaging Suite offers detector options to support fast, efficient X-ray exams with solutions that allow you to prioritize high-resolution requirements and workflow needs. You can be confident in either solution. Choose what works best for your imaging team. Along with Helix 2.2 advanced image processing, FlashPad detectors consistently display clear images with 5 lp/mm resolution at low dose.

FlashPad HD

- 100 micron
- 75% DQE



FlashPad Plus

- 100 micron
- 72% DQE
- 40% lighter than previous generations²



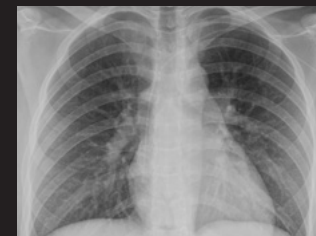


One-touch reprocessing for line visualization

QuickEnhance, which comes standard, is customizable to different anatomies for tube and line placement, gauze and instrument checks, implant assessment, and more. Plus, AutoGrid provides up to 24 percent shorter exam setup time.⁵ These innovations work seamlessly to increase workflow efficiency, image quality, and consistency.

24%

shorter exam
setup time⁵



Chest, anterior-posterior,
medium adult



Chest, anterior-posterior,
medium adult with QuickEnhance

Creating new standards in reliability and security



Taking the proper diagnostic and security measures is critical to keep your system running smoothly and securely. AMX Navigate features intelligent remote service technologies such as InSite™ remote service support and monitoring, eDelivery remote software upload, OnWatch™ remote monitoring, and iCenter™ system analytics.

To keep your system protected, AMX Navigate includes an arsenal of cybersecurity applications like anti-virus protection, intrusion detection, data encryption, and storage along with a network firewall. These components operate harmoniously to maximize uptime and system reliability. Healthcare professionals have long trusted the AMX name for its rugged reliability. AMX Navigate is no exception, continuing its legacy of dependability while broadening the scope of what mobile X-ray can do.



InSite remote service support



eDelivery remote software upload



OnWatch remote monitoring



iCenter system analytics



Cybersecurity applications

Exceptional performance. Everytime.

For your department to operate at its full capability, you need a mobile X-ray system that can quickly and easily move with you wherever you go. We have redefined mobility with AMX Navigate, a state-of-the-art mobile X-ray that is easy to maneuver while reducing stress and strain when positioning for imaging.

In addition to increased mobility, it provides fast, clear, and consistent results with the help of AI, a simplified end-to-end imaging experience with Effortless Workflow and comprehensive remote services. AMX Navigate is engineered to deliver consistent, reliable results whenever and wherever you need it. You can trust AMX Navigate to always deliver an exceptional performance for your healthcare practice.



About GE HealthCare Technologies Inc.

GE HealthCare is a leading global medical technology, pharmaceutical diagnostics, and digital solutions innovator, dedicated to providing integrated solutions, services, and data analytics to make hospitals more efficient, clinicians more effective, therapies more precise, and patients healthier and happier. Serving patients and providers for more than 100 years, GE HealthCare is advancing personalized, connected, and compassionate care, while simplifying the patient's journey across the care pathway. Together our Imaging, Ultrasound, Patient Care Solutions, and Pharmaceutical Diagnostics businesses help improve patient care from diagnosis, to therapy, to monitoring. We are a \$19.6 billion business with 51,000 colleagues working to create a world where healthcare has no limits.

Follow us on [LinkedIn](#), [X](#) (formerly Twitter), and [Insights](#) for the latest news, or visit our website <https://www.gehealthcare.com/> for more information.

*AMX Navigate with FlashPad Plus is not commercially available in all markets.
Check with your local GE HealthCare representative for availability in your country.

References

1. Free Motion telescoping column upwards motion lift force (11.0 N) compared to the average upwards motion lift force of comparison systems with a non-motorized column (35.7 N).
2. FlashPad Plus 14x17" detector weight (4.2 lbs) compared to FlashPad HD 14x17" detector weight (7 lbs).
3. Based on side-by-side comparison of manual workflow of 11 clicks (without login) or 27 clicks (with login) vs. Zero Click Exam workflow of 0 clicks.
4. Jin M X, Gilotra K, Young A, et al. Technologists to Capture Higher Quality Portable Chest X-rays. (September 15, 2022) Call to Action: Creating Resources for Radiology. *Cureus* 14(9): e29197. doi:10.7759/cureus.29197. [cureus.com/articles/112339-call-to-action-creating-resources-for-radiology-technologists-to-capture-higher-quality-portable-chest-x-rays](https://www.cureus.com/articles/112339-call-to-action-creating-resources-for-radiology-technologists-to-capture-higher-quality-portable-chest-x-rays).
5. Based on results from bench testing study on Optima™ XR240amx Gen 2.

GE HealthCare reserves the right to make changes in specifications and features shown herein, or discontinue the product described at any time without notice or obligation.

© 2024 GE HealthCare. AMX, FlashPad, InSite, OnWatch, and iCenter are trademarks of GE HealthCare. GE is a trademark of General Electric Company used under trademark license.

June 2024
JB22647XX



GE HealthCare